

## GUARANTEE

BRALO riveting tools are covered by a 12-month guarantee. The tool guarantee period starts on the date of delivery. It is necessary to provide the invoice or the delivery note number.

Damage caused by manufacturing defects will be covered by the guarantee only if it is used for the purposes for which it was conceived. The guarantee will be void if the tool is misused in any form.

Claims can only be accepted if the complete riveting tool is returned to BRALO.

USE ONLY BRALO SPARE PARTS.

**BRALO, S.A.**  
Milanos, 12  
Pol. Ind. La Estación  
28320 Pinto  
MADRID (SPAIN)  
Made in China.  
Bralo Industrial Ningbo Co., Ltd

**BRALO ESPAÑA - BRALO U.K - BRALO FRANCE - BRALO DEUTSHLAND - BRALO ITALIA  
BRALO PORTUGUESA - BRALO CZ - BRALO CHINA - BRALO MEXICO - BRALO TURKEY**

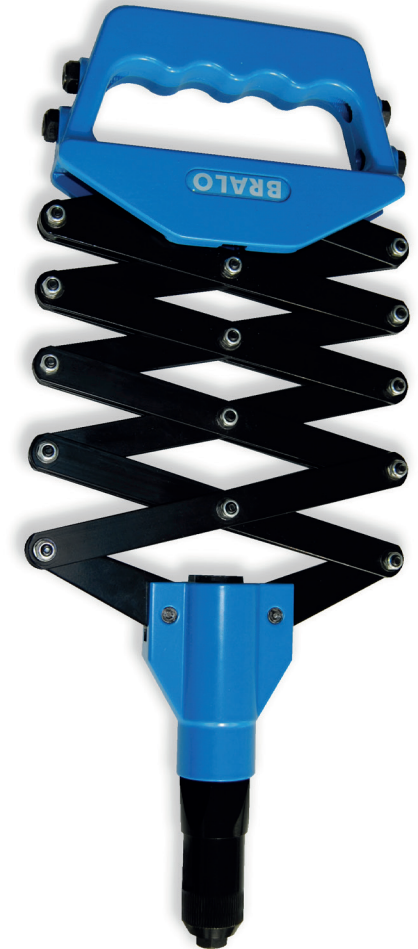


[www.bralo.com](http://www.bralo.com)

# INSTRUCTION MANUAL

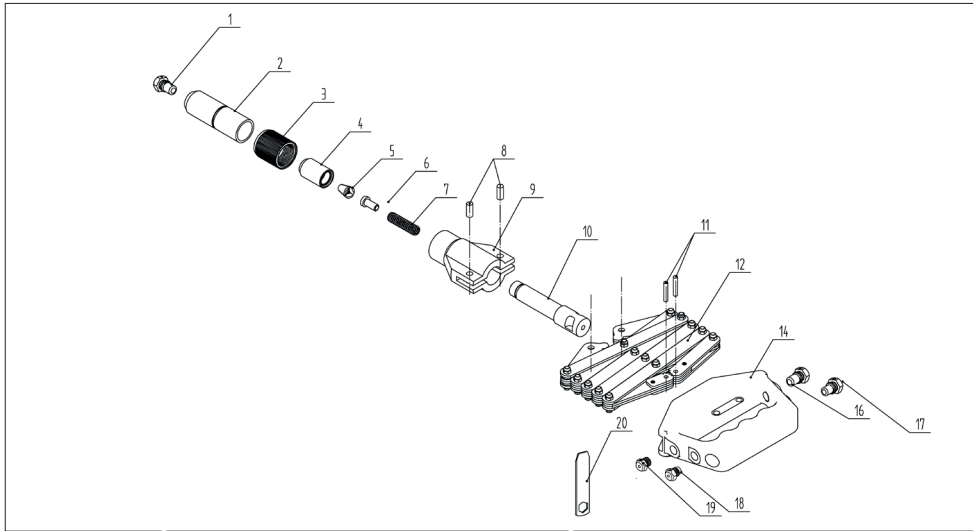
## BM 68 PROFESSIONAL RIVETING TOOL

- (ES) REMACHADORA PROFESIONAL DE ESLAVONES
- (GB) PROFESSIONAL RIVET TOOL
- (FR) PINCE À EXTENSEUR POUR RIVETS
- (DE) HOCHLEISTUNGSSCHERENNIETGERÄT
- (PT) REBITADEIRA TIPO SANFONA
- (IT) RIVETTATRICE MANUALES PER RIVETTI
- (RU) ПРОФЕССИОНАЛЬНЫЙ ЗАКЛЕПОЧНЫЙ ИНСТРУМЕНТ





## BREAKDOWN



Nº	REF.	Nº	REF.		
1	05BM0068001	Nosepiece 6,4	10	05BM0068010	Power coupling
2	05BM0068002	Nosepiece cap	11	05BM0068011	Spring pins
3	05BM0068003	Nut	12	05BM0068012	Bellows
4	05BM0068004	Jaw case	14	05BM0068014	Handle
5	05BM0068005	Jaws (3 units)	16	05BM0068016	Nosepiece 3,2
6	05BM0068006	Jaw pusher	17	05BM0068017	Nosepiece 4,0
7	05BM0068007	Spring	18	05BM0068018	Nosepiece 4,8/5,0
8	05BM0068008	Body Pins	19	05BM0068019	Nosepiece 6,0
9	05BM0068009	Body	20	05BM0068020	Wrench



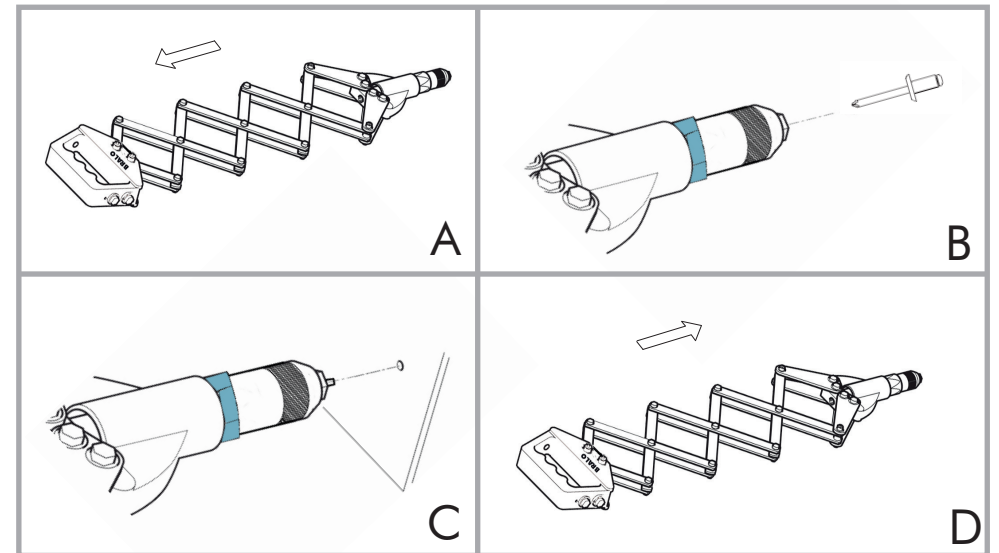
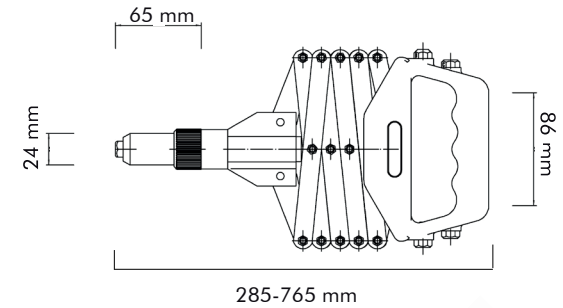
NOSEPIECE	ALU/STEEL	ALU/ALU	STEEL	INOX	COPPER	HARDGRIP
	d1	d1	d1	d1	d1	d1
n°16	3,0 - 3,2	3,0 - 3,2	3,0 - 3,2	3,0 - 3,2	3,0 - 3,2	3,2 steel
n°17	4,0	4,0	4,0	4,0	4,0	3,2 inox
n°18	4,8 - 5,0					4,0
n°19 *	6,0	4,8	4,8 - 5,0	4,8 - 5,0	4,8	4,8
n°1 *	6,4		6,0 - 6,4	6,0 - 6,4		6,0

\*For a long use, it recommends use BM-164 BRALO riveting tool



## TECHNICAL SPECIFICATIONS

Weight: 1.645 grs.  
Length closed: 285 mm.  
Length open: 765 mm.  
Total stroke: 8 mm.



	CLEAN	REPLACE
JAWS	5.000	100.000