

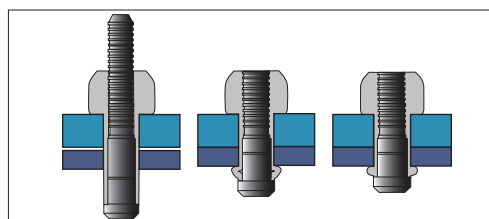
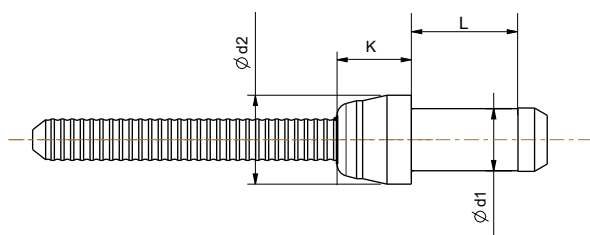
BLIND RIVET ESTRUBOLT REMACHE ESTRUBOLT

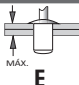

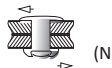
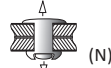


English	Español	Français	Deutsch	Portugues
Dome head	Cabeza alomada	Tête plate	Flachrundkopf	Cabeça boleada
Body: Steel zincplated C8C *	Cuerpo: Acero cincado C8C *	Corps: Acier zingué C8C *	Hülse: Stahl verzinkt C8C *	Corpo: Aço zincado C8C *
Mandrel: Steel zincplated **	Vástago: Acero cincado **	Clou: Acier zingué **	Dorn: Stahl verzinkt **	Prego: Aço zincado **

* Zincplated Steel/acero cincado ISO 4042/Zn/An/144h

** Steel/acero 35B2 o C45



d1 Ø m/m	L Nominal m/m	 E m/m		d2 Ø m/m	K m/m	 (N)	 (N)	Part No./Ref.
6,4	11,70	2,50 - 4,00	7,00-7,40	9,45	5,30	22600	14500	G1820006412
	13,30	4,00 - 5,50						G1820006413
	15,00	5,50 - 7,00						G1820006415
	16,50	7,00 - 8,50						G1820006416
	18,00	8,70 - 10,50						G1820006418
	19,50	10,30 - 11,90						G1820006419
	21,00	11,90 - 13,50						G1820006421
	23,00	13,50 - 15,10						G1820006423
	24,50	15,10 - 16,70						G1820006424
	26,00	16,70 - 18,30						G1820006426
	27,50	18,30 - 19,80						G1820006428
	29,20	19,80 - 21,40						G1820006429
30,50	21,40 - 23,00						G1820006430	
8,0	17,50	4,80 - 7,90	8,80-9,40	11,9	6,80	35800	23100	G1820008018
	19,00	6,40 - 9,50						G1820008019
	20,80	8,00 - 11,10						G1820008021
	24,00	11,10 - 14,30						G1820008024
	27,50	14,30 - 17,50						G1820008028
	30,50	17,50 - 20,50						G1820008031
	33,50	20,60 - 24,00						G1820008034
	36,50	23,80 - 27,00						G1820008037
9,6	19,50	4,80 - 7,90	10,30-11,10	14,10	8,00	49400	32300	G1820009620
	22,50	7,90 - 11,10						G1820009623
	26,00	11,10 - 14,30						G1820009626
	29,00	14,30 - 17,50						G1820009629
	32,20	17,50 - 20,60						G1820009632
	35,30	20,50 - 23,80						G1820009635
	38,50	23,80 - 27,00						G1820009639
	41,70	27,00 - 30,10						G1820009642
	45,00	30,10 - 33,30						G1820009645

Test according to / Ensayos realizados según EN ISO 14589

The total or partial reproduction of this document is prohibited. The figures showed in this catalogue are typical values and they could be changed as a result of the continuous improvement of products. Please, do not hesitate to contact us if you need an updated information. Queda prohibida la reproducción total o parcial de este documento. Los datos que aparecen en este catálogo son valores típicos y están sujetos a modificaciones como consecuencia de la mejora continua de los productos. Consúltenos si necesita información actualizada.

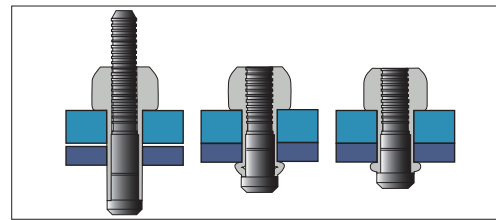
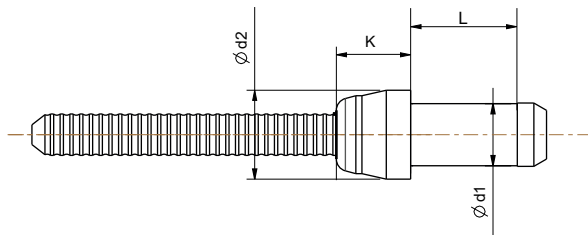
BLIND RIVET ESTRUBOLT REMACHE ESTRUBOLT



English	Español	Français	Deutsch	Portugues
Dome head	Cabeza alomada	Tête plate	Flachrundkopf	Cabeça boleada
Body: Steel zincplated C8C *	Cuerpo: Acero cincado C8C *	Corps: Acier zingué C8C *	Hülse: Stahl verzinkt C8C *	Corpo: Aço zincado C8C *
Mandrel: Steel zincplated **	Vástago: Acero cincado **	Clou: Acier zingué **	Dorn: Stahl verzinkt **	Prego: Aço zincado **

* Zincplated Steel/acero cincado ISO 4042/Zn/An/144h

** Steel/acero 35B2 o C45



d1 Ø m/m	L Nominal m/m	E m/m		d2 Ø m/m	K m/m	(N)	(N)	Part No/Ref.
12,7	25,50	6,40 - 9,50	13,90-14,80	19,10	11,10	89600	57800	G1820001325
	28,50	9,50 - 12,70						G1820001329
	31,80	12,70 - 15,90						G1820001332
	35,00	15,90 - 19,10						G1820001335
	38,00	19,10 - 22,20						G1820001338
	41,30	22,20 - 25,40						G1820001341
	44,50	25,40 - 28,60						G1820001345
	47,60	28,60 - 31,80						G1820001348
	50,80	31,80 - 34,90						G1820001351
	54,00	34,90 - 38,10						G1820001354
57,00	38,10 - 41,30						G1820001357	
16,0	30,80	6,40 - 12,70	17,50-18,50	23,7	13,20	126700	91200	G1820001631
	37,0	12,70 - 19,10						G1820001637
	43,5	19,10 - 25,40						G1820001644
	47,0	25,30 - 31,80						G1820001647
	56,0	31,80 - 38,10						G1820001656
19,0	XX	21,00-22,20	28,6	16,60	200600	129400	G18200019XX	

Test according to / Ensayos realizados según EN ISO 14589

The total or partial reproduction of this document is prohibited. The figures showed in this catalogue are typical values and they could be changed as a result of the continuous improvement of products. Please, do not hesitate to contact us if you need an updated information. Queda prohibida la reproducción total o parcial de este documento. Los datos que aparecen en este catálogo son valores típicos y están sujetos a modificaciones como consecuencia de la mejora continua de los productos. Consúltenos si necesita información actualizada.